



AL1020-BL Bib Split Cowhide Leather

ATTACH TO CAPE SLEEVES

Attach the AL1020-BL Color Block Leather Bib to our JL1021-BB Color Block Leather Cape Sleeves to create a versatile protective garment with a modern and stylish twist.

FEATURES & BENEFITS

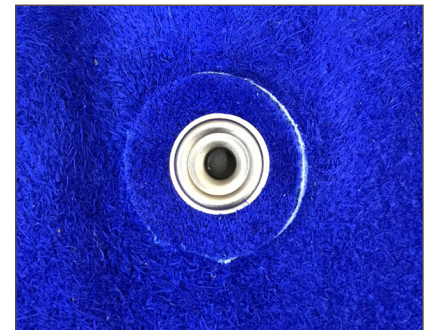
- Rugged & durable split cowhide leather
- Adjustable waist strap
- Leather reinforcements on all snaps
- Dupont™ Kevlar® stitching
- 20" length

APPLICATIONS & INDUSTRIES

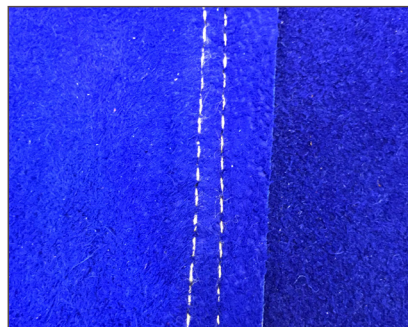
- Welding



Adjustable waist strap for a secure and comfortable fit



Leather reinforcements on all snaps



Dupont™ Kevlar® stitching with abrasion & flame resistance



Snaps to attach to JL1021-BB Cape Sleeves



10747 Norwalk Blvd.
Santa Fe Springs, CA 90670
www.BlackStallion.com

800.527.3826 Phone
800.738.2690 Fax
cs@revcoindustries.com